

# The Haven

Scandinavian Living

A modern one-bedroom retreat that combines simplicity, elegance, and high-performance living. Compact, versatile, and built to last.

640

Sq Ft

1

Bedroom

10'6"

Height



Proudly Canadian Crafted

Lindsay, Ontario  
Canada

Welcome to The Haven

## Compact Freedom, Modern Living.

The Haven is designed for those who want modern living without excess. At 16 feet wide and 40 feet long, every square inch is purposefully optimized. Step inside and experience a bright, open environment filled with natural light — where Scandinavian design philosophy meets Canadian craftsmanship.



16' x 40'  
Floor Plan

### Key Highlights



#### SIPS Thermal Envelope

Structural Insulated Panels engineered for Canadian winters with maximum R-value performance.



#### Low-E Glazing

CSA-approved multi-pane windows flood the space with natural light while saving energy.



#### Open Concept Interior

Seamless kitchen-to-living transition creates volume that feels far larger than its footprint.



#### Steel Cladding

Bold Canadian steel roofing and cladding with a maintenance-free, modern Scandinavian profile.



#### Durable PVC Finishes

25mm premium PVC wall and flooring panels — sleek, impact-resistant, and easy to maintain.



#### Spa-Grade Bathroom

Fully finished modern bathroom with walk-in shower option and premium contemporary fixtures.

*"Built for those who find peace in the geometry of nature. The Haven is not just a home — it's a refined living philosophy."*

— Norsemen Haus Design Philosophy

02 / 05 — The Haven · Norsemen Haus

Explore online

[norsemenhaus.com/haven](https://norsemenhaus.com/haven)

### Technical Specifications

## The Haven Specs.

Modern, Efficient, and Built to Last.

#### Total Living Area

640 sq ft

Fully optimized layout

#### Width

16 ft

Generous compact footprint

#### Length

40 ft

ADU optimized dimensions

#### Ceiling Height

10'6" ft

Vaulted open feel

#### Bedrooms

1

Spacious + built-in storage

#### Bathrooms

1 Full

Premium fixtures & finishes

#### Structural Components

Main Structure

Advanced SIPS Panels

Exterior Finish

Canadian Vertical Steel Cladding

Insulation

High-Performance EPS Core

Roofing

Canadian Steel Roofing

Layout Type

Open Concept

#### Interior Standards

Internal Walls

25mm Architectural PVC Panels

Flooring

25mm Waterproof PVC

Windows

CSA Multi-Pane Low-E Glass

Utility Wing

Dedicated Mechanical & Laundry

Color Options

Multiple Available

03 / 05 — The Haven · Norsemen Haus

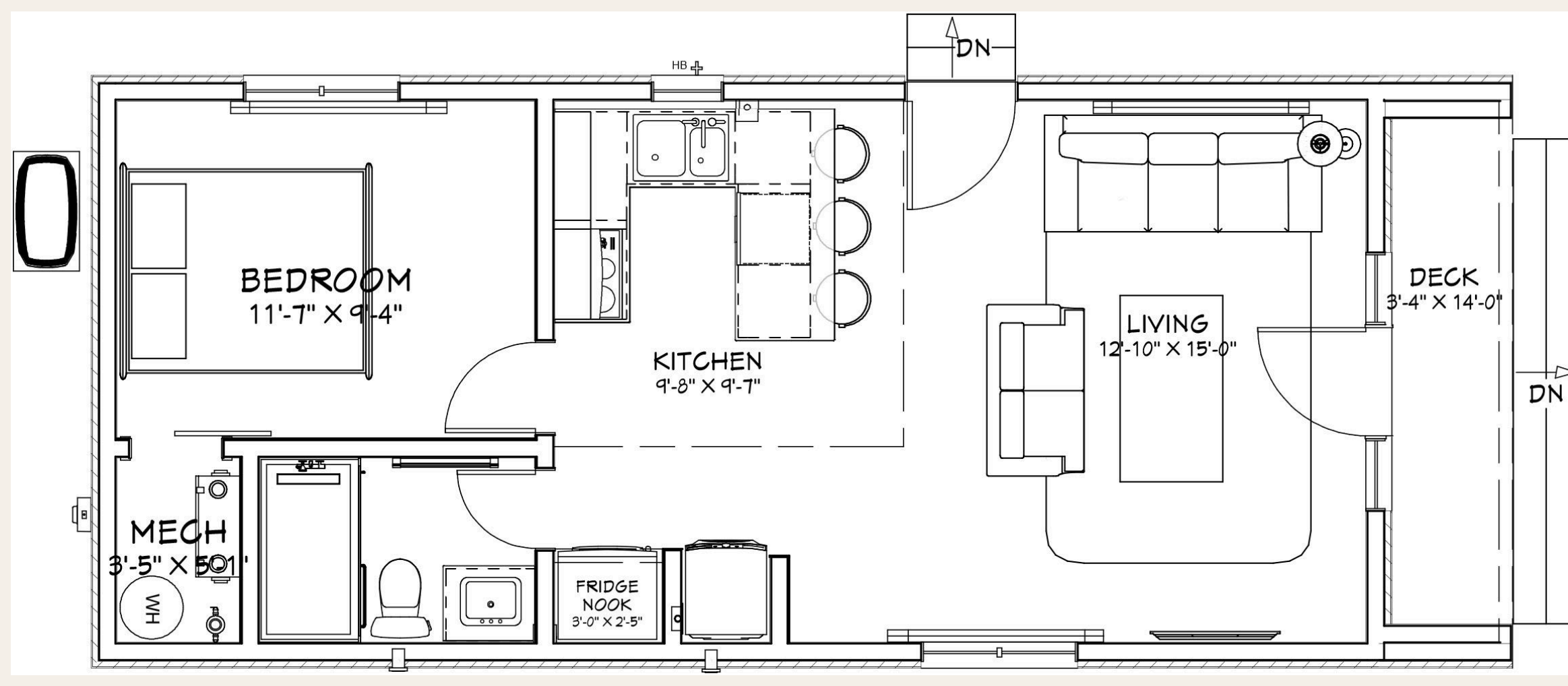
### Floor Plan

## Every Square Foot, Purposefully Designed.

Total Area

640

sq ft · 16' x 40' x 10'6"



#### Zone 01

##### Living & Kitchen

- Open-concept vaulted living area
- Fully equipped kitchen island
- Premium modern finishes
- Large panoramic windows

#### Zone 02

##### Bedroom

- Spacious queen/king capacity
- Built-in storage solutions
- Natural light + privacy
- Loft space available

#### Zone 03

##### Bath & Utility

- Fully finished modern bathroom
- Walk-in shower option
- Integrated laundry closet
- Dedicated mechanical space

04 / 05 — The Haven · Norsemen Haus

### Perfect For

## Versatile By Design.

The Haven adapts effortlessly to your lifestyle and property goals. Whether you're creating an income stream or a private sanctuary, this is the model that delivers.



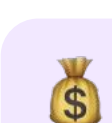
#### ADU / Garden Suite

A stylish accessory dwelling unit that adds significant value and livable square footage to any property.



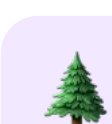
#### Guest House

A self-contained, welcoming retreat for family and friends — complete privacy, complete comfort.



#### Rental Investment

Income-producing short- or long-term rental with premium design appeal that commands top rates.



#### Private Retreat

A beautifully crafted personal escape — built for those who seek peace in purposeful design.

### What's Included

## The Haven Standard.

- ✓ Advanced SIPS Structural Insulated Panels
- ✓ Canadian Steel Roofing & Vertical Cladding
- ✓ CSA-Approved Multi-Pane Low-E Windows
- ✓ 25mm Premium PVC Wall & Flooring System
- ✓ Fully Finished Modern Bathroom
- ✓ Dedicated Mechanical & Laundry Wing
- ✓ Open-Concept Living / Kitchen Core
- ✓ Maximum R-Value Optimized Insulation
- ✓ Code Compliant — Canadian Building Standards

#### Ready to Inquire?

The first conversation is not a sales pitch — it's a chance to explore what's possible for your property.

[norsemenhaus.com/haven](https://norsemenhaus.com/haven)

# Let's Build Something Timeless.

The Haven is more than a home. It's a refined living experience designed for flexibility, comfort, and lasting value — proudly built in Lindsay, Ontario, Canada.

