

The Lilly

THE BOUTIQUE MODEL

Intimate. Atmospheric. Uncompromising. A 844 square foot study in perfected Scandinavian proportion.

844
SQ FT

2
BEDROOMS

19'9"
HEIGHT



PROUDLY CANADIAN CRAFTED

Lindsay, Ontario
Canada

Mastery of the Compact.

The Lilly proves that luxury is not defined by square footage, but by the quality of light and the integrity of materials.

Soaring 19'9ft ceilings and an aggressive window schedule make the space feel significantly larger than its 844 sq ft footprint — wrapped in 25mm high-performance PVC panels for a monolithic, contemporary aesthetic.



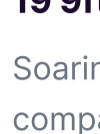
16' x 40'
FLOOR PLAN

— KEY HIGHLIGHTS



SIPS Thermal Envelope

Advanced Structural Insulated Panels providing a monolithic barrier with industry-leading R-value efficiency.



19'9ft Verticality

Soaring wall heights transform the compact footprint into an expansive, airy volume that breathes with the landscape.



Low-E Glazing

CSA-certified multi-pane windows with aggressive window schedule for maximum natural light and energy efficiency.



Social Core

Open-concept kitchen and living designed as a hub for effortless entertaining and daily ritual.



Monolithic PVC

25mm thick premium PVC wall and flooring panels — seamless, waterproof, impact-resistant, and fully customizable.



Steel Cladding

Clad in bold Canadian steel — a weather-proof sculptural shell designed to last generations.

"Built for those who find peace in the geometry of nature. The Lilly is a sanctuary that proves great things truly do come in purposeful packages."

— NORSEMEN HAUS DESIGN PHILOSOPHY

02 / 07 — THE LILLY · NORSEMEN HAUS

— TECHNICAL SPECIFICATIONS

The Lilly Specs.

Intimate. Atmospheric. Uncompromising.

TOTAL LIVING AREA

844 sq ft

Fully optimized layout

WIDTH

16 ft

Generous compact footprint

LENGTH

40 ft

ADU optimized dimensions

CEILING HEIGHT

19'9" ft

Dramatic vaulted volume

BEDROOMS

2

Spacious configurations

BATHROOMS

1 Full

Premium fixtures & finishes

FOOTPRINT & VOLUME

Total Area	844 sq ft
Dimensions	16ft x 40ft x 19'9"ft
Configuration	2 Bed, 1 Bath
Layout	Open Concept
Laundry	Integrated

EXTERIOR & STRUCTURE

Chassis	Advanced SIPS Panels
Cladding	Canadian Vertical Steel
Windows	CSA Multi-Pane Low-E
Insulation	High-Performance EPS Core
Standard	Canadian Building Code+

INTERIOR SHELL

Wall Panels	25mm Architectural PVC
Flooring	25mm Waterproof PVC
Colour Options	6 Designer Palettes
Utility Room	Dedicated Mech / Laundry
Ceiling	Vaulted — 19'9" Peak

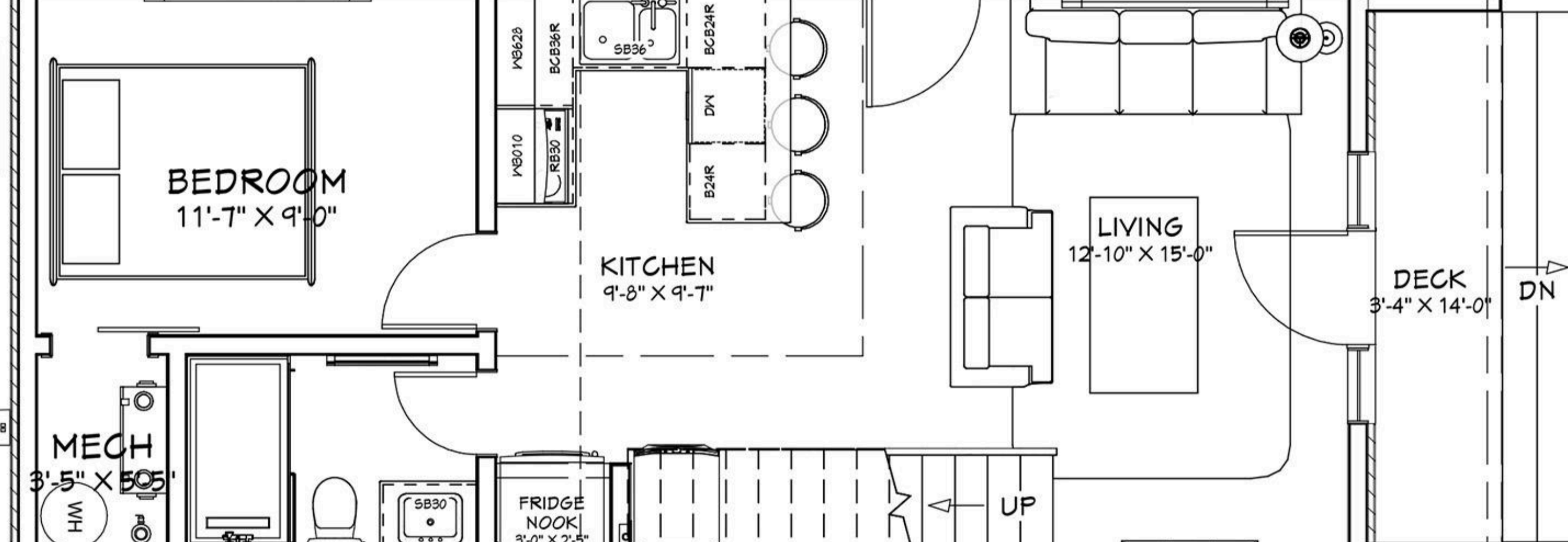
03 / 07 — THE LILLY · NORSEMEN HAUS

— FLOOR PLAN

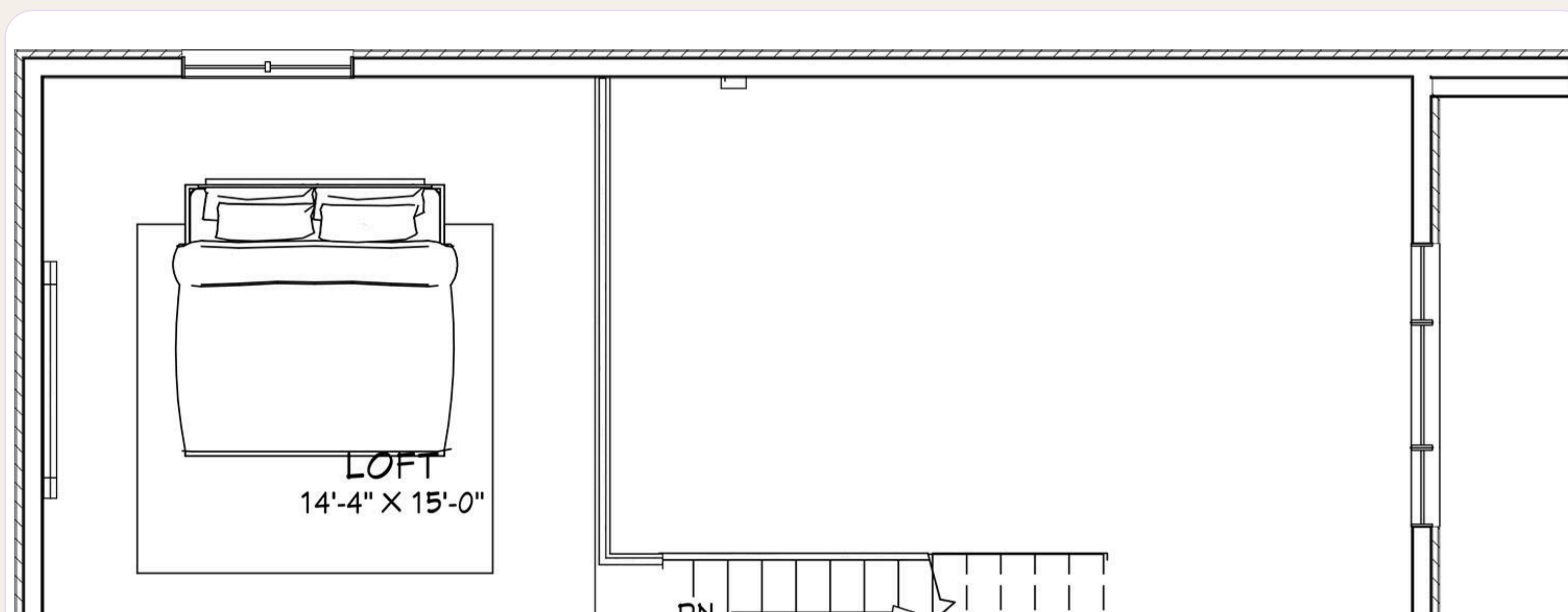
844 Sq Ft of Infinite Horizon.

TOTAL AREA

844
sq ft · 16' x 40' x 19'9"



04 / 07 — THE LILLY · NORSEMEN HAUS



ZONE 01
Living & Kitchen

- Vaulted open-concept core
- Full kitchen with island
- Panoramic Low-E windows
- Premium PVC finishes

ZONE 02
Primary Bedroom

- Spacious queen/king capacity
- Built-in storage options
- Natural light & privacy
- 19'9" ceiling height

ZONE 03
Bedroom 2 + Bath

- Flexible guest/office room
- Fully finished bathroom
- Walk-in shower option
- Premium fixtures throughout

ZONE 04
Utility Wing

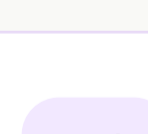
- Integrated laundry closet
- Dedicated mechanical space
- Discreetly separated
- Full utility access

05 / 07 — THE LILLY · NORSEMEN HAUS

— PERFECT FOR

Versatile By Design.

The Lilly's two bedrooms and soaring ceilings make it the most adaptable model in the Norsemen lineup — effortlessly shifting between primary residence, income property, and private sanctuary.



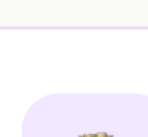
ADU / Garden Suite

Two bedrooms and a full bath make the Lilly the ideal garden property value — adding meaningful living space and significant property value.



Primary Residence

With 844 sq ft and soaring ceilings, the Lilly lives far larger than its footprint — a complete, refined home for one or two.



Airbnb / Rental Income

Premium Scandinavian aesthetics and two bedrooms command top short- and long-term rental rates in any market.



Private Retreat

A beautifully engineered personal escape. Built for those who seek peace in purposeful, atmospheric design.

— WHAT'S INCLUDED

The Lilly Standard.

- ✓ Advanced SIPS Structural Insulated Panels
- ✓ Canadian Steel Roofing & Vertical Cladding
- ✓ CSA-Approved Multi-Pane Low-E Windows
- ✓ 25mm Premium PVC Wall & Flooring System
- ✓ Two Spacious Bedrooms
- ✓ Fully Finished Modern Bathroom
- ✓ Dedicated Mechanical & Laundry Wing
- ✓ 6 Standard Designer Colour Palettes
- ✓ Code Compliant — Canadian Building Standards

READY TO INQUIRE?

The first conversation is not a sales pitch — it's a chance to explore what's possible for your property.

norsemenhaus.com/lilly

06 / 07 — THE LILLY · NORSEMEN HAUS

Let's Build Something Timeless.

The Lilly is more than a home. It is a study in purposeful design. Discover how 844 square feet can feel like an endless horizon — proudly built in Lindsay, Ontario, Canada.

